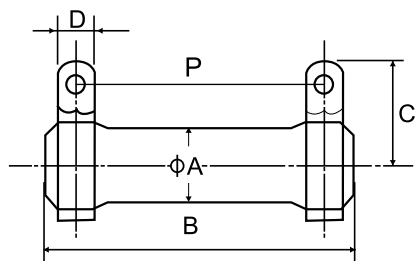


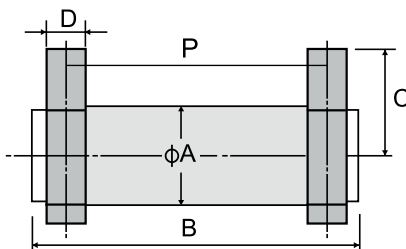
Terminal Wire-Wound Fixed Resistors

KNH, KNHA Type

KNH Type

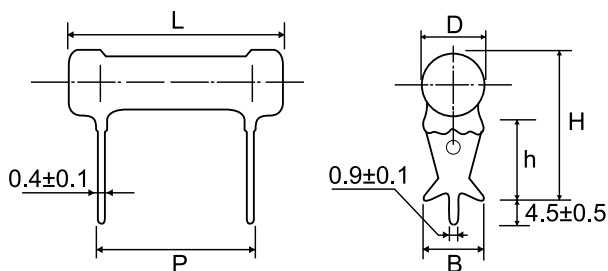


KNHA Type



Part No.	Style	Power Rating at 70°C	Dimension (mm)					Resistance Range
			A±1.5	B±1.5	C±3	D±0.5	P±5	
KNH020	KNH 20W	20W	19	50	19	4.5	40	0.4Ω ~ 10KΩ
KNH030	KNH 30W	30W	19	75	19	4.5	65	0.5Ω ~ 15KΩ
KNH040	KNH 40W	40W	19	90	19	4.5	80	0.6Ω ~ 20KΩ
KNH050	KNH 50W	50W	28	75	31	8	65	3Ω ~ 25KΩ
KNH060	KNH 60W	60W	28	90	31	8	80	3Ω ~ 30KΩ
KNH080	KNH 80W	80W	28	115	31	8	100	3Ω ~ 40KΩ
KNH100	KNH 100W	100W	28	140	31	8	130	3Ω ~ 50KΩ
KNHA25	KNHA 25W	25W	21	41	24	5	30	0.4Ω ~ 10KΩ
KNHA30	KNHA 30W	30W	21	42	24	5	30	0.4Ω ~ 10KΩ

KNS Type



Part No.	Style	Power Rating at 70°C	Dimension (mm)						Resistance Range
			D Max	L±1.5	P±0.5	H±1	h±1	B±0.5	
KNS02W	KNS 200	2W	8	19	8	19	12	4.5	0.1Ω ~ 50Ω
KNS03W	KNS 300	3W	8	21	10	19	13	4.5	0.5Ω ~ 50Ω
KNS05W	KNS 500	5W	10	26	15	21.5	13	6.5	0.5Ω ~ 100Ω
KNS07W	KNS 700	7W	10	31	20	21.5	13	6.5	1Ω ~ 1KΩ
KNS08W	KNS 800	8W	10	41	30	21.5	13	6.5	1Ω ~ 1.5KΩ
KNS0AW	KNS 1000	10W	10	54	43	21.5	13	6.5	1Ω ~ 2KΩ