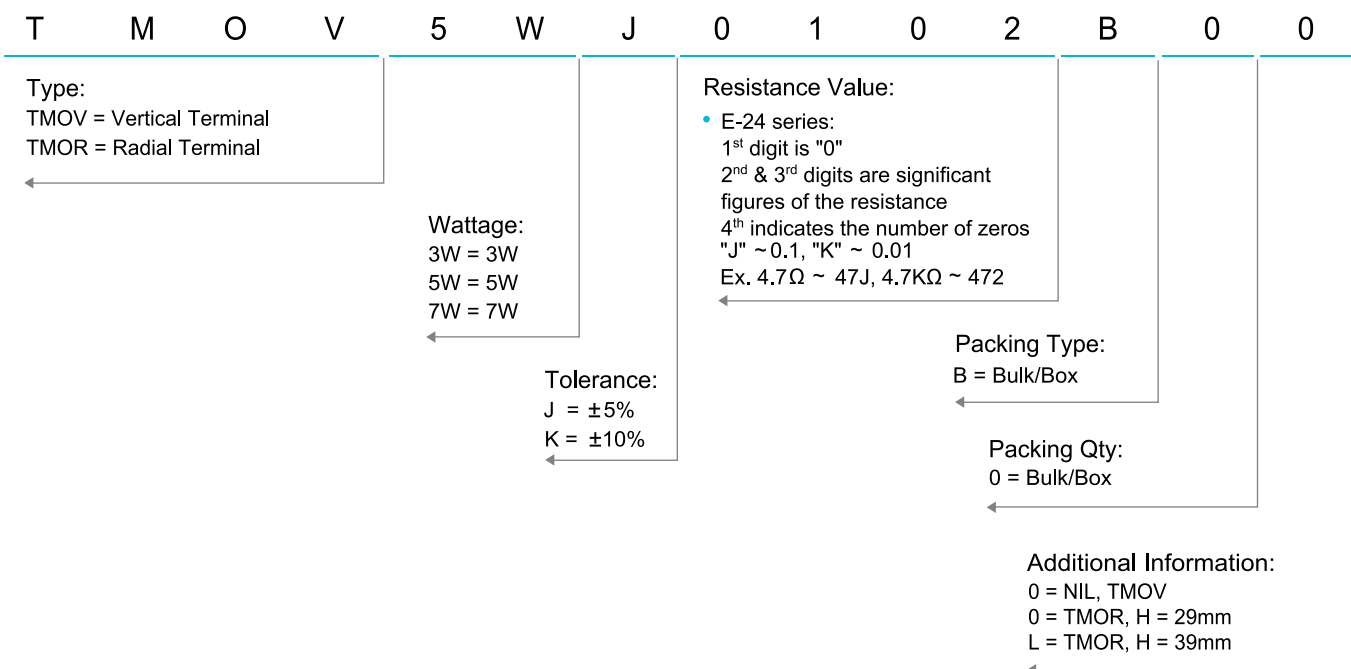


Terminal Type of Metal Oxide Film Fixed Resistors

Performance Specification

| | |
|---------------------------------|--|
| Temperature Coefficient | <20Ω: ±400PPM/°C; ≥20Ω: ±350PPM/°C |
| Short Time Overload | ±(2.0% + 0.05Ω)Max, with no evidence of mechanical damage. |
| Dielectric Withstanding Voltage | No evidence of flashover, mechanical damage, arcing or insulation breakdown. |
| Pulse Overload | ±(5.0% + 0.05Ω)Max, with no evidence of mechanical damage. |
| Terminal Strength | No evidence of mechanical damage. |
| Resistance to Soldering Heat | ±(1.0% + 0.05Ω)Max, with no evidence of mechanical damage. |
| Solderability | Min. 95% coverage. |
| Resistance to Solvent | No deterioration of protective coating and markings. |
| Temperature Cycling | ±(2.0% + 0.05Ω)Max, with no evidence of mechanical damage. |
| Humidity (Steady state) | ±(2.0% + 0.05Ω)Max, with no evidence of mechanical damage. |
| Load Life in Humidity | ±(5.0% + 0.05Ω)Max |
| Load Life | ±(5.0% + 0.05Ω)Max |
| Non-Flame | No evidence of flaming or arcing. |

Ordering Procedure: Ex.: TMOV 5W, +/-5%, 1KΩ, B/B



Terminal Type of Metal Oxide Film Fixed Resistors

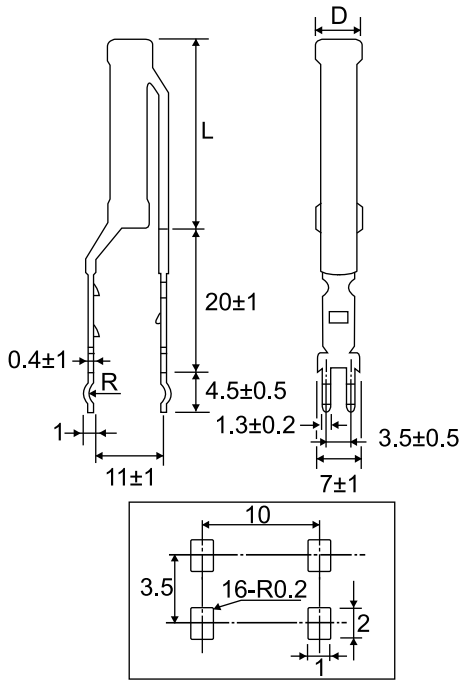
Features

- High safety standard
- High purity ceramic core
- Excellent non-flame coating
- Meet EIAJ-RC2655A requirements
- Stable performance in diverse environment
- Too low or too high ohmic value can be supplied on a case to case basis



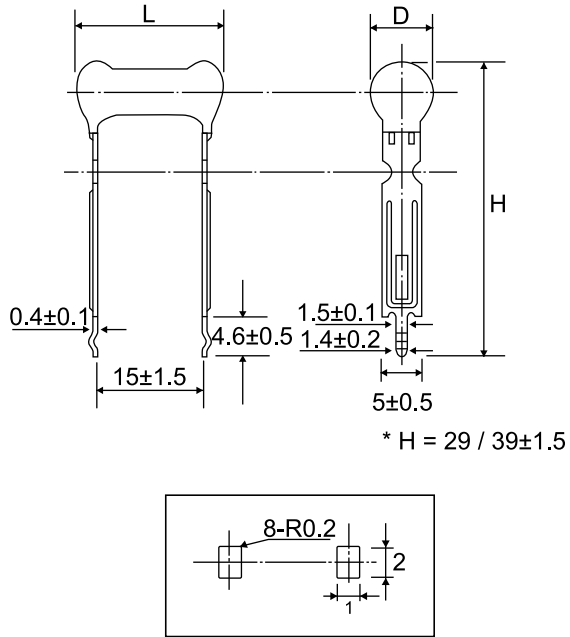
Standard : 5% ,10% -- E - 24 series

Vertical Type



*Mounting hole dimensions on P.C.B (Reference)

Radial Type

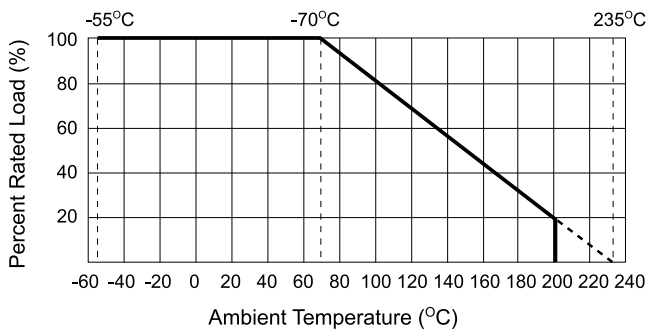


* H = 29 / 39±1.5

*Mounting hole dimensions on P.C.B (Reference)

| Part No. | Style | Power Rating at 70°C | Dimension (mm) | | Max Working Voltage | Max Overload Voltage | Max Pulse Overload Voltage | Resistance Range | Tolerance % |
|----------|----------|----------------------|----------------|-----|---------------------|----------------------|----------------------------|------------------|-------------|
| | | | D±1 | L±1 | | | | | |
| TMOV5W | TMOV 500 | 5W | 7 | 20 | 500V | 800V | 1,500V | ≤ 10Ω | ±10% |
| | | | | | | | | 10Ω~10KΩ | ±5% |
| TMOV7W | TMOV 700 | 7W | 7 | 30 | 500V | 800V | 1,500V | ≤ 10Ω | ±10% |
| | | | | | | | | 10Ω~10KΩ | ±5% |
| TMOR3W | TMOR 300 | 3W | 6 | 16 | 350V | 600V | 1,000V | ≤ 10Ω | ±10% |
| | | | | | | | | 10Ω~43KΩ | ±5% |
| TMOR5W | TMOR 500 | 5W | 7 | 18 | 500V | 800V | 1,500V | ≤ 10Ω | ±10% |
| | | | | | | | | 10Ω~43KΩ | ±5% |

Derating Curve



Heat Rise Chart

